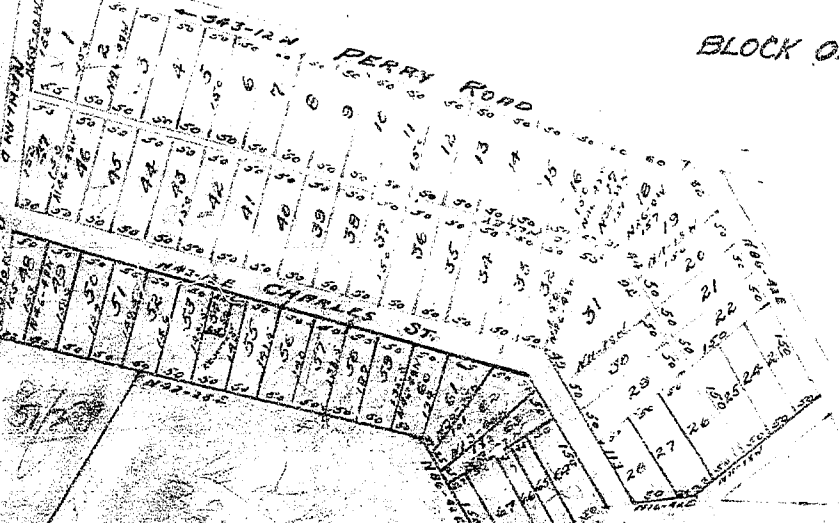


See A-474
Gurman Estate



GURMAN ESTATE

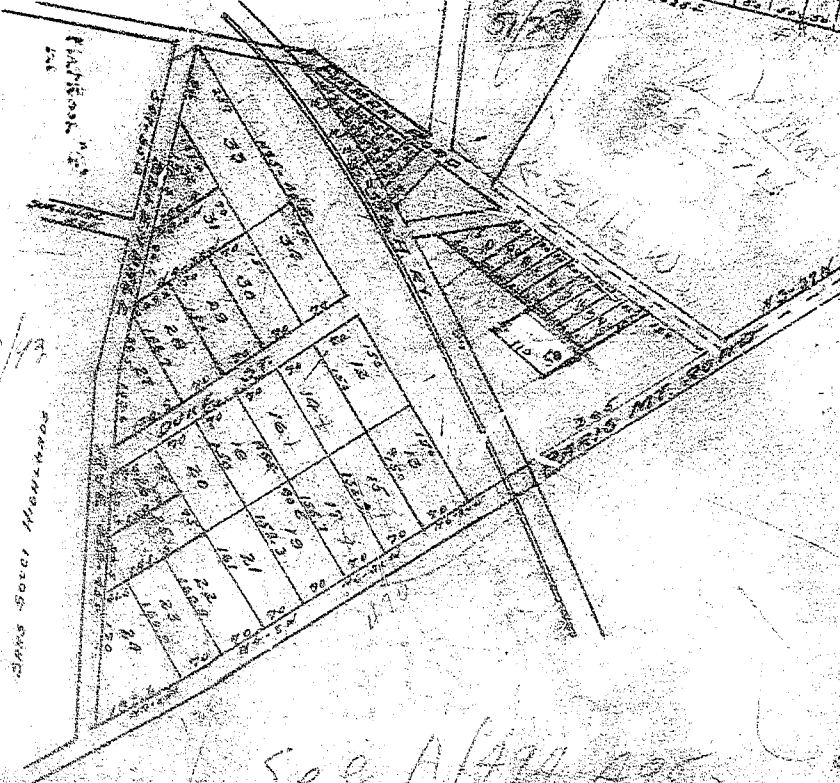
BLOCK ONE



BLOCK TWO

12/19

See Soci Newlands



NEWLANDS
NEAR GREENVILLE, S. C.
OWNED BY
F. G. NEW
SCALE 1" = 200' MAY 14, 1919.
Recorded by F. G. BRADY

See A-474 495